

# 21013 POLICE HQ FIT-OUT

- GENERAL NOTES:**
- CONTRACTORS ARE TO FOLLOW ALL RELEVANT BDA GOVT. COVID-19 SAFETY REGULATIONS CURRENTLY IN FORCE



NO.	REVISION	DATE
4	REVISION	18 JUN 24
3	SECURITY LIGHTS	19 FEB 24
2	BUILDING PERMIT	7 OCT 22
1	BUILDING PERMIT	22 MAR 21



**ONSITE ENGINEERING SERVICES LTD.**

Location: 27 Jubilee Rd, Devonshire DV06  
 Mail: P.O. Box HM 2170, Hamilton HMJX, Bermuda  
 Tel: 441-297-0592 | Fax: 441-295-1988 | Email: info@onsite.bm

PREPARED BY: JB      CHECKED BY: JB      APPROVED BY: JB

PROJECT NAME

**POLICE HQ FIT-OUT**

33 HEADQUARTERS HILL  
 DEVONSHIRE, DV02

**SHEET TITLE**  
**ELECTRICAL**  
**COVERSHEET**

ISSUED FOR REVISION

SCALE: As Indicated      SHEET SIZE: 24" x 36"

PROJECT NO: 21013      SHEET NO: E001      REVISION: 4

**ELECTRICAL INDEX**

ELECTRICAL COVERSHEET	E001
PANEL SCHEDULE & DETAILS	E100
LIGHTING PLANS	E400
POWER PLANS	E500
MECH POWER PLANS	E600
FIRE ALARM PLANS	FA400

	WALL MOUNTED DUPLEX RECEPTACLE (20A, 120V, 3W). NUMBER DENOTES CIRCUIT
	SAME AS ABOVE, BUT GFI-TYPE
	HOMERUN TO DESIGNATED PANEL. NUMBER NEXT TO ARROW DENOTES CIRCUITING
	WALL MOUNTED TELEPHONE OUTLET CONSISTING OF 4-11/16" JUNCTION BOX, ADAPTOR RING, 1" C STUB-UP TO ACCESSIBLE CEILING, AND DRAG WIRE
	JUNCTION BOX
	THERMOSTAT. CONTRACTOR SHALL PROVIDE A BACKBOX AND 3/4" C STUB-UP WITH DRAG WIRE. REFER TO MECHANICAL DRAWINGS FOR EXACT LOCATIONS
	WALL MOUNTED SINGLE-GANG BACKBOX WITH ADAPTOR RING, AND DRAG WIRE
	DECORA STYLE LIGHT SWITCH. LETTER DENOTES ZONE
	DIMMING SWITCH
	SWITCH WITH INTEGRAL PROGRAMMABLE TIMING FUNCTION FOR EXTERIOR LIGHTING.
	TOGGLE SWITCH FOR LOCAL DISCONNECT OF MECHANICAL EQUIPMENT
	TOGGLE SWITCH FOR LOCAL DISCONNECT OF MECHANICAL EQUIPMENT
	DISCONNECT SWITCH. 'A' = POLES, 'B' = FUSE SIZE (OR NON-FUSED), 'C' = FRAME SIZE
	EXIT SIGN. SHALL BE PROVIDED WITH 90 MINUTE BATTERY BACK-UP
	DENOTES FIXTURE TO BE ON EMERGENCY WITH 90 MINUTE BATTERY BACK-UP
	POWER/DATA IN-FEED FOR ELECTRIFIED FURNITURE SYSTEM (CONDUIT RUN ON CEILING OF FLOOR BELOW). 3/4" C FOR POWER, 2" C FOR DATA
	POWER/DATA IN-FEED FOR ELECTRIFIED FURNITURE SYSTEM (OFF COLUMN/WALL). 3/4" C FOR POWER, 2" C FOR DATA
	POWER/DATA/AV CONNECTIONS AT THE FLOOR FOR CONFERENCE TABLE
	POWER/DATA CONNECTIONS AT THE FLOOR FOR CONFERENCE TABLE
	MAGNETIC LOCK
	CARD READER
	FIRE ALARM SMOKE DETECTOR
	FIRE ALARM STROBE
	FIRE ALARM SPEAKER STROBE
	ABC FIRE EXTINGUISHER
	DENOTES EXISTING
	DENOTES NEW
	DENOTES CONDUIT TO BE RUN ON CEILING OF FLOOR BELOW (OR TRENCHED THROUGH FLOOR SLAB ON GROUND FLOOR)
	SECURITY LIGHTS WITH INTERGRAL PHOTOCELL, EXACT SPECIFICATION TO BE COORDINATED WITH CLIENT.

**ELECTRICAL GENERAL NOTES:**

- ALL WORKS TO BE PERFORMED IN ACCORDANCE WITH THE BERMUDA BUILDING CODE, WITH PARTICULAR ATTENTION TO NFPA 70 (NEC 2011) AND NFPA 72 FOR LIFE SAFETY.
- THE DRAWINGS INDICATE SIZE AND GENERAL LOCATION OF WORK. EXACT LOCATION AND ELEVATION OF ALL EQUIPMENT SHALL BE FIELD COORDINATED PRIOR TO COMMENCEMENT OF WORK.
- ANY DAMAGES TO EXISTING STRUCTURAL WALLS, FLOORS, CEILINGS, ENTRY DOORS, ETC CAUSED BY THE CONTRACTOR SHALL BE REPAIRED AT NO ADDITIONAL EXPENSE.
- ALL ELECTRICAL POWER MUST BE DISCONNECTED PRIOR TO START OF DEMOLITION.
- PANEL DIRECTORIES SHALL BE PROVIDED FOLLOWING COMPLETION OF WORK.
- ELECTRICAL PANEL COVERS ARE NOT TO BE LEFT OFF AT ANY TIME UNLESS MEN ARE WORKING ON SITE.
- ELECTRICAL CONTRACTOR SHALL VISIT AND EXAMINE THE EXISTING AREAS AFFECTED BY THE SCOPE OF WORK AND BECOME FAMILIAR WITH THE EXISTING CONDITIONS. CONTRACTOR SHALL INCLUDE ALL FORESEEN DIFFICULTIES INTO PRICING.
- ALL EQUIPMENT CALLED TO BE DEMOLISHED OR REMOVED SHALL HAVE ELECTRICAL CIRCUITING CUT BACK TO SOURCE UNLESS OTHERWISE NOTED.
- ALL RELOCATED ELECTRICAL EQUIPMENT SHALL HAVE ELECTRICAL CONDUIT AND WIRE EXTENDED AS REQUIRED TO NEW EQUIPMENT LOCATION UNLESS OTHERWISE NOTED.
- ALL EQUIPMENT AND MATERIALS SHALL BE NEW UNLESS OTHERWISE NOTED.
- ALL INSTALLATION OF PIPE, FIXTURES & EQUIPMENT SHALL BE AS PER THE MANUFACTURER'S RECOMMENDED INSTALLATION PRACTICE
- SERVICE ACCESS DOORS SHALL BE PROVIDED FOR ALL FIXTURES, PIPE FITTINGS & EQUIPMENT WHERE REQUIRED FOR SERVICING.
- PROVIDE & INSTALL CONDUIT FOR LOW VOLTAGE CIRCUITS AS SHOWN.
- ALL CONDUITS, WIRING AND ALL OTHER ASSOCIATED ELECTRICAL EQUIPMENT SHALL BE PROVIDED EXCEPT WHERE SPECIFIED. ALL CONDUIT SHALL BE EMT OR BX TYPE AND RATED FOR AIR PLENUM. MINIMUM CONDUIT SIZE SHALL BE 1/2".
- COORDINATE WITH OTHER TRADES FOR EXACT FINAL LOCATIONS OF ALL EQUIPMENT REQUIRING ELECTRICAL FEEDERS. COORDINATION SHALL HAPPEN PRIOR TO COMMENCEMENT OF WORK
- PENETRATIONS THROUGH FIRE RATED PARTITIONS (INCLUDING FLOOR SLABS) SHALL BE TREATED WITH APPROPRIATE FIRE STOPPING MEASURES AS REQUIRED BY THE BUILDING CODE.
- THESE DRAWINGS ARE BASED ON CURRENT KNOWLEDGE. CONTRACTOR SHALL COORDINATE WITH ALL OTHER TRADES ON SITE TO ENSURE COMPATIBILITY WITH SITE CONDITIONS.
- ITEMS OF MATERIAL & EQUIPMENT NOT SPECIFICALLY NOTED AS PROVIDED BY BLDG ON THE DRAWINGS OR MENTIONED IN THE SPECIFICATIONS BUT WHICH ARE NECESSARY TO MAKE A COMPLETE & OPERATING INSTALLATION SHALL BE THE RESPONSIBILITY OF THE CONTRACTOR
- ELECTRICAL CONTRACTOR SHALL PROVIDE AS-BUILT DRAWINGS FOLLOWING COMPLETION OF WORK.
- AT COMPLETION OF PROJECT, ELECTRICAL CONTRACTOR SHALL PERFORM A TEST OF THE EMERGENCY LIGHTING SYTEM. CONFIRMATION OF FUNCTIONALITY SHALL BE PROVIDED TO THE ENGINEER OF RECORD.

**FIRE ALARM NOTES:**

- THE INTENTION OF THE FIRE ALARM DRAWING IS TO PROVIDE A NEW FIRE ALARM SYSTEM FOR THE BUILDING DEVICES TO ENSURE CODE COMPLIANT DEVICE COVERAGE.
- ELECTRICIAN SHALL COORDINATE WITH THE FIRE ALARM VENDOR PRIOR TO COMMENCEMENT OF WORK TO ENSURE SELECTED SYSTEM HAS CAPACITY FOR DEVICE LAYOUT SHOWN ON THE DESIGN DOCUMENTS.
- ELECTRICAL CONTRACTOR SHALL COORDINATE A/B CIRCUITING OF THE STROBE SYSTEM.

**MECHANICAL POWER NOTES:**

- THE INTENTION OF THESE ELECTRICAL DRAWINGS ARE TO SHOW THE GENERAL LAYOUT OF MECHANICAL AND/OR PLUMBING EQUIPMENT AND RESPECTIVE ELECTRICAL CONNECTIONS WITH ASSOCIATED DEVICES. THESE DRAWINGS SHALL BE UTILIZED FOR CIRCUITING PURPOSES ONLY.
- CIRCUITS ARE DESIGNATED BY NUMBER SHOWN ADJACENT TO EQUIPMENT OR BY PANEL SCHEDULE. WIRING IS ONLY SHOWN UNDER SPECIAL CIRCUMSTANCES. ALL CONDUIT, WIRE, BOXES, AND FITTINGS REQUIRED TO ENERGIZE THE EQUIPMENT SHOWN IN THE PANEL SCHEDULES SHALL BE INCLUDED IN BIG PRICING.
- CIRCUIT NUMBERS ARE FOR REFERENCE ONLY. FIELD CONDITIONS PREVAIL.
- ELECTRICAL CONTRACTOR SHALL SUBMIT SHOP DRAWINGS PRIOR TO INSTALLATION OF EQUIPMENT FOR ENGINEER REVIEW AND APPROVAL. REFER TO SPECIFICATIONS FOR SHOP DRAWING LIST.
- REFER TO MECHANICAL DRAWINGS FOR THERMOSTAT LOCATIONS AND PROVIDE A 3/4" C STUB-UP AND BACKBOX FOR EACH

**POWER NOTES:**

- FOR EXACT LOCATION AND MOUNTING HEIGHT OF ALL POWER, TELE/DATA, AV OUTLETS, AND ELECTRIFIED FURNITURE IN-FEEDS SEE ARCHITECTURAL DRAWINGS. THIS DRAWING REFLECTS CIRCUITING INFORMATION ONLY.
- CIRCUITS ARE DESIGNATED BY NUMBER SHOWN ADJACENT TO EQUIPMENT OR BY PANEL SCHEDULE. WIRING IS ONLY SHOWN UNDER SPECIAL CIRCUMSTANCES. ALL CONDUIT, WIRE, BOXES, AND FITTINGS REQUIRED TO ENERGIZE THE EQUIPMENT SHOWN IN THE PANEL SCHEDULES SHALL BE INCLUDED IN BIG PRICING.
- CIRCUIT NUMBERS ARE FOR REFERENCE ONLY. FIELD CONDITIONS PREVAIL.
- ALL BRANCH WIRING SHALL BE RUN CONCEALED IN WALLS AND ABOVE HUNG CEILING.
- SEE DRAWING E100 FOR PANEL SCHEDULE
- WHERE CONDUIT RUNS EXCEEDS (4) 90 DEGREE BENDS, PROVIDE A PULLBOX
- ALL CIRCUIT NUMBERS REFER TO PANELS AS FOLLOWS:
  - A. 1st FLOOR
    - a. D#X = DP-1
    - b. A#X = RP1-A
  - B. 2nd FLOOR
    - a. A#X = RP2-A
    - b. B#X = RP2-B

**LIGHTING NOTES:**

- CIRCUIT AND ZONE ARE DESIGNATED BY NUMBER SHOWN ADJACENT TO EACH LIGHT FIXTURE
- ALL BRANCH CIRCUITING SHALL BE RUN CONCEALED IN WALLS AND ABOVE HUNG CEILINGS.
- THE INTENT IS TO ACTIVELY RE-USE THE EXISTING LIGHT FIXTURES. CONTRACTOR SHALL TAKE DOWN, CLEAN, AND STORE EXISTING FIXTURES FOR USE DURING THE CONSTRUCTION PHASE.
- FIXTURES TAGGED 'EM' SHALL BE PROVIDED WITH A 90-MINUTE INTEGRAL BATTERY PACK.

**1 SYMBOLS LIST**  
 E001 1/4" = 1'-0"

**2 ELECTRICAL NOTES**  
 E001 3/32" = 1'-0"

This drawing is and shall remain the exclusive property of Onsite Engineering Services Limited (OES) and the reproduction and/or use in whole or in part is prohibited without prior written consent from OES.

The Contractor shall check and verify all levels, datum points and dimensions and report any discrepancy or omission to the Engineer prior to construction.

Read this drawing alongside architectural and any other Consultants' documentation. OES shall not be held responsible for lack of Contractor coordination or violations resulting from incorrect application process.

GENERAL NOTES:



NO.	REVISION	DATE
4	REVISION	18 JUN 24
3	SECURITY LIGHTS	19 FEB 24
2	BUILDING PERMIT	7 OCT 22
1	BUILDING PERMIT	22 MAR 21



**ONSITE ENGINEERING SERVICES LTD.**

Location: 27 Jubilee Rd. Devonshire DV06  
Mail: P.O. Box HM 2170, Hamilton HMJX, Bermuda  
Tel: 441-297-0592 | Fax: 441-295-1988 | Email: info@onsite.bm

PREPARED BY: JB      CHECKED BY: JB      APPROVED BY: JB

PROJECT NAME

## POLICE HQ FIT-OUT

33 HEADQUARTERS HILL  
DEVONSHIRE, DV02

### SHEET TITLE PANEL SCHEDULE & DETAILS

ISSUED FOR REVISION

SCALE: 1/4" = 1'-0"      SHEET SIZE: 24" x 36"

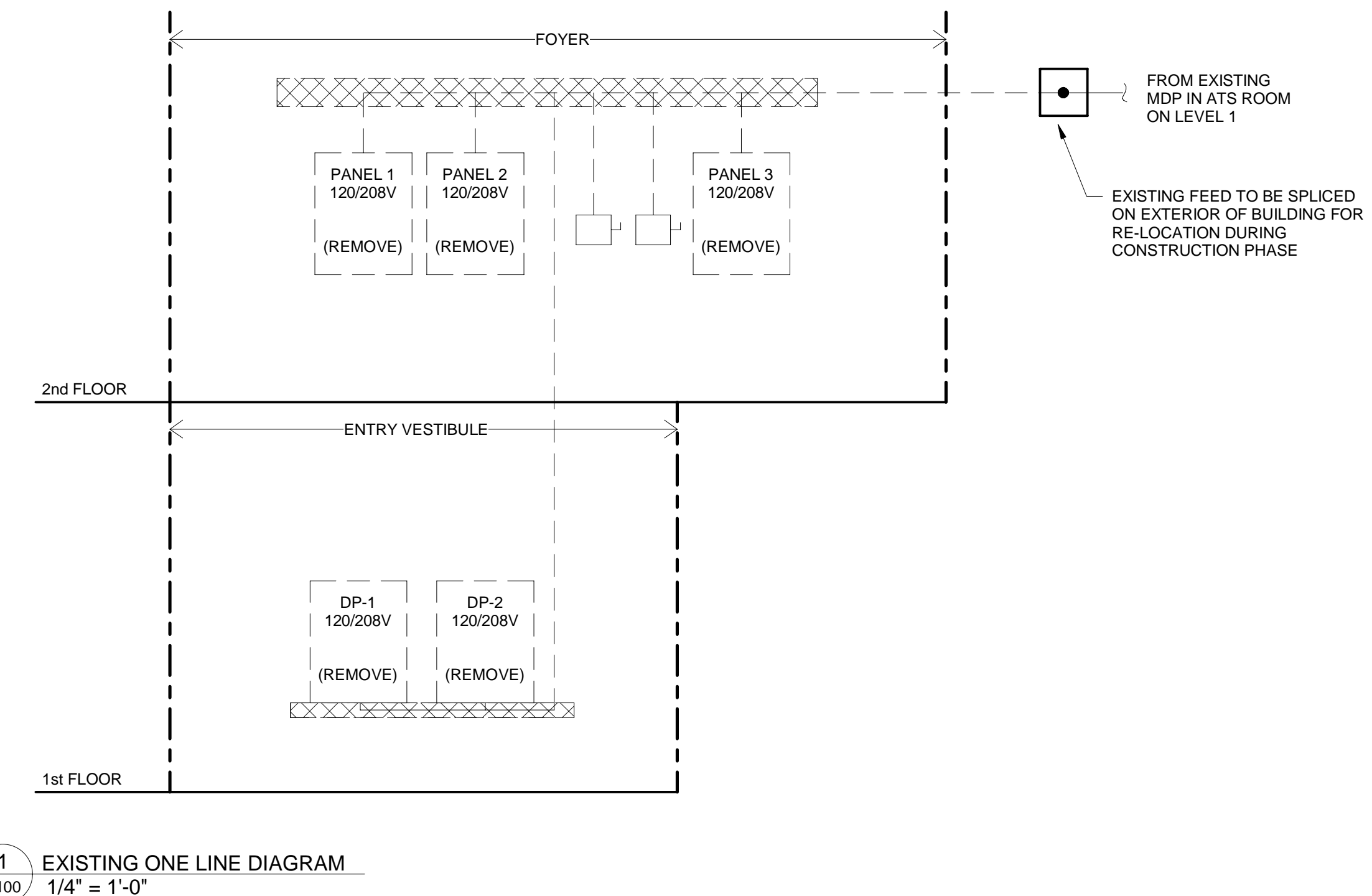
PROJECT NO: 21013      SHEET NO: E100      REVISION: 4

PANEL: (N) DP-1		MOUNTING: SURFACE									
LOCATION: 1ST FLOOR ELECTRICAL CLOSET		FED FROM: FROM MDP IN ATS ROOM									
RATING: 250A, 120/208V, 3PH, 4W		NOTES: *** INDICATES GFI BREAKER									
No.	#	W	Brk.	Description	Phase	Description	Brk.	W	#	No.	
1	2	5475	100A		A	WH-01	30A	2400	10	2	
3	2	5475		RP1-A	B		2P	2400	10	4	
5	2	5475	3P		C	RP-01	20/1P	1000	10	6	
7	2	6100	100A		A	P-01	30A	1200	10	8	
9	2	6100		RP2-A	B		2P	1200	10	10	
11	2	6100	3P		C	AC-1-02	30A	1650	10	12	
13	2	6167	100A		A		2P	1650	10	14	
15	2	6167		RP2-B	B	AC-2-02	30A	1650	10	16	
17	2	6167	3P		C		2P	1650	10	18	
19	8	3310	35A		A	AC-2-03	30A	1650	10	20	
21	8	3310		AC-1-01	B		2P	1650	10	22	
23	8	3310	3P		C	SPARE	20/1P			24	
25	6	4350	45A		A	SPARE	20/1P			26	
27	6	4350		AC-2-01	B	SPARE	20/1P			28	
29	6	4350	3P		C	SPARE	20/1P			30	
31			20/1P	SPARE	A	SPARE	20/2P			32	
33			20/1P	SPARE	B	SPARE	20/1P			34	
35			20/1P	SPARE	C	SPARE	20/1P			36	
37			20/1P	SPARE	A	SPARE	20/1P			38	
39			20/1P	SPARE	B	SPARE	20/1P			40	
41			20/1P	SPARE	C	SPARE	20/1P			42	
CONNECTED KVA						94.31					
DEMAND KVA						66.01					

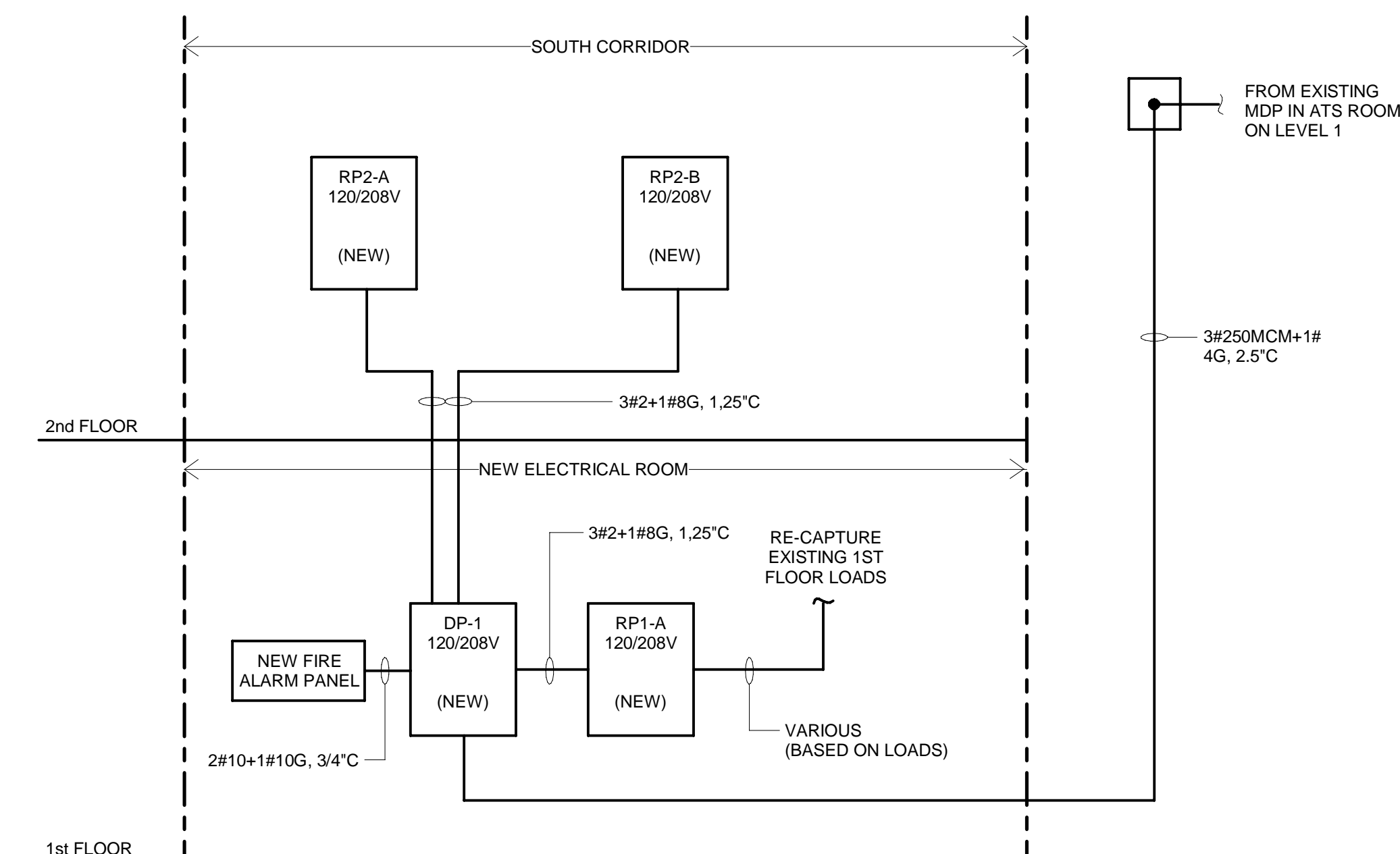
PANEL: (N) RP1-A		MOUNTING: SURFACE									
LOCATION: 1ST FLOOR ELECTRICAL CLOSET		FED FROM: DP-1									
RATING: 100A, 120/208V, 3PH, 4W		NOTES: *** INDICATES GFI BREAKER									
No.	#	W	Brk.	Description	Phase	Description	Brk.	W	#	No.	
1	12	100	20/1P	SOFT INTERVIEW/VIEWING	A	RE-WIRED CIRCUITS	20/1P	150	12	2	
3	12	150	20/1P	JANITOR CLOSET	B	RE-WIRED CIRCUITS	20/1P	200	12	4	
5	12	50	20/1P	FOYER/FRONT PORCH CONV	C	RE-WIRED CIRCUITS	20/1P	50	12	6	
7	12	300	20/1P	BACK PORCH	A	RE-WIRED CIRCUITS	20/1P	800	12	8	
9	12	250	20/1P	SGT. INSPECTOR/INSPECTOR CHIE	B	RE-WIRED CIRCUITS	20/1P	500	12	10	
11	12	250	20/1P	OPEN AREA CONVENIENCE	C	RE-WIRED CIRCUITS	20/1P	200	12	12	
13	12	500	20/1P	OPEN AREA WORKSTATIONS	A	RE-WIRED CIRCUITS	20/1P	125	12	14	
15	12	500	20/1P	OPEN AREA WORKSTATIONS	B	BOARDROOM CONVENIENCE	20/1P	500	12	16	
17	12	500	20/1P	OPEN AREA WORKSTATIONS	C	BOARDROOM AV	20/1P	250	12	18	
19	12	800	20/1P	KITCHEN	A	LIGHTING	20/1P	1000	12	20	
21	12	250	20/1P	KITCHEN	B	LIGHTING	20/1P	1000	12	22	
23	12	100	20/1P	WC	C	LIGHTING	20/1P	1000	12	24	
25	12	100	20/1P	SHOWER CONV	A	LIGHTING	20/1P	1000	12	26	
27		450	15A	BC'S	B	LIGHTING	20/1P	1000	12	28	
29		450	2P		C	SPARE	20/2P			30	
31		450	15A	ERV-01	A	SPARE	20/2P			32	
33		450	2P		B	SPARE	20/1P			34	
35		1000	20/1P	ACCESSIBLE HAND DRYER	C	SPARE	20/1P			36	
37		1000	20/1P	WC 4	A	SPARE	20/1P			38	
39		1000	20/1P	WC 5	B	SPARE	20/1P			40	
41		180	20/1P	JANITOR CLOSET	C	SPARE	20/1P			42	
CONNECTED KVA						16.61					
DEMAND KVA						12.29					

PANEL: (N) RP2-A		MOUNTING: SURFACE									
LOCATION: 2ND FLOOR SOUTH CORRIDOR		FED FROM: DP-1									
RATING: 100A, 120/208V, 3PH, 4W		NOTES: *** INDICATES GFI BREAKER									
No.	#	W	Brk.	Description	Phase	Description	Brk.	W	#	No.	
1	12	1200	20/1P	COPIER	A	SHOWER	20/1P	150	12	2	
3	12	600	20/1P	SHREDDER	B	WC 1	20/1P	150	12	4	
5	12	500	20/1P	ADMIN	C	DEPUTY COMMISSIONER	20/1P	300	12	6	
7	12	400	20/1P	MEETING ROOM	A	STAFF OFFICER	20/1P	300	12	8	
9	12	250	20/1P	CONVENIENCE	B	COMMISSIONER	20/1P	250	12	10	
11	12	250	20/1P	ASST. COMM	C	COMMISSIONER	20/1P	250	12	12	
13	12	250	20/1P	ASST. COMM	A	KITCHEN	20/1P	800	12	14	
15	12	450	15A	ERV-02	B	KITCHEN	20/1P	1200	12	16	
17	12	450	2P		C	KITCHEN	20/1P	500	12	18	
19	12	350	15A	BC'S	A	KITCHEN	20/1P	250	12	20	
21	12	350	2P		B	LOUNGE	20/1P	250	12	22	
23	12	200	15A	BC'S	C	COPIER	20/1P	1200	12	24	
25	12	200	2P		A	LIGHTING	20/1P	1000	12	26	
27	12	250	20/1P	EF-01	B	LIGHTING	20/1P	1000	12	28	
29		20/1P	SPARE		C	LIGHTING	20/2P	1000	12	30	
31		20/1P	SPARE		A	LIGHTING	20/2P	1000	12	32	
33		20/1P	SPARE		B	LIGHTING	20/1P	1000	12	34	
35		20/1P	SPARE		C	WC 1 HAND DRYER	20/1P	1000	12	36	
37		20/1P	SPARE		A	SHOWER ROOM 2	20/1P	1000	12	38	
39		20/1P	SPARE		B	SPARE	20/1P			40	
41		20/1P	SPARE		C	SPARE	20/1P			42	
CONNECTED KVA						18.30					
DEMAND KVA						13.73					

PANEL: (N) RP2-B		MOUNTING: SURFACE									
LOCATION: 2ND FLOOR SOUTH CORRIDOR		FED FROM: DP-1									
RATING: 100A, 120/208V, 3PH, 4W		NOTES: *** INDICATES GFI BREAKER									
No.	#	W	Brk.	Description	Phase	Description	Brk.	W	#	No.	
1	12	250	20/1P	OFFICE	A	OPEN AREA OFFICE DESKS	20/1P	1200	12	2	
3	12	250	20/1P	OFFICE	B	OPEN AREA OFFICE DESKS	20/1P	1200	12	4	
5	12	250	20/1P	OFFICE	C	OPEN AREA OFFICE DESKS	20/1P	1200	12	6	
7	12	100	20/1P	RESTROOM	A	VIEWING	20/1P	500	12	8	
9	12	100	20/1P	SPARE	B	OPEN AREA CONVENIENCE	20/1P	50	12	10	
11	12	100	20/1P	RESTROOM/SHOWER 2	C	STORAGE	20/1P	50	12	12	
13	12	400	20/1P	RECEPTION	A	KITCHEN	20/1P	800	12	14	
15	12	600	20/3P	INTERVIEW	B	KITCHEN	20/1P	100	12	16	
17	12	200	20/1P	STORAGE	C	SPARE	20/1P	1000	12	18	
19	12	350	15A	BC'S	A	OFFICE	20/1P	250	12	20	
21	12	350	2P		B	OFFICE	20/1P	250	12	22	
23	12	350	15A	BC'S	C	EF-2	20/1P	250	12	24	
25	12	350	2P		A	LIGHTING	20/1P	1000	12	26	
27		1000	20/1P	WC 2 HAND DRYER	B	LIGHTING	20/1P	1000	12	28	
29		1000	20/1P	WC 3 HAND DRYER	C	LIGHTING	20/2P	1000	12	30	
31		1000	20/1P	SHOWER ROOM 2 HAND DRYER	A	LIGHTING	20/2P	1000	12	32	
33		20/1P	SPARE		B	LIGHTING	20/1P	1000	12	34	
35		20/1P	SPARE		C	SPARE	20/1P			36	
37		20/1P	SPARE		A	SPARE	20/1P			38	
39		20/1P	SPARE		B	SPARE	20/1P			40	
41		20/1P	SPARE		C	SPARE	20/1P			42	
CONNECTED KVA						18.50					
DEMAND KVA						13.88					



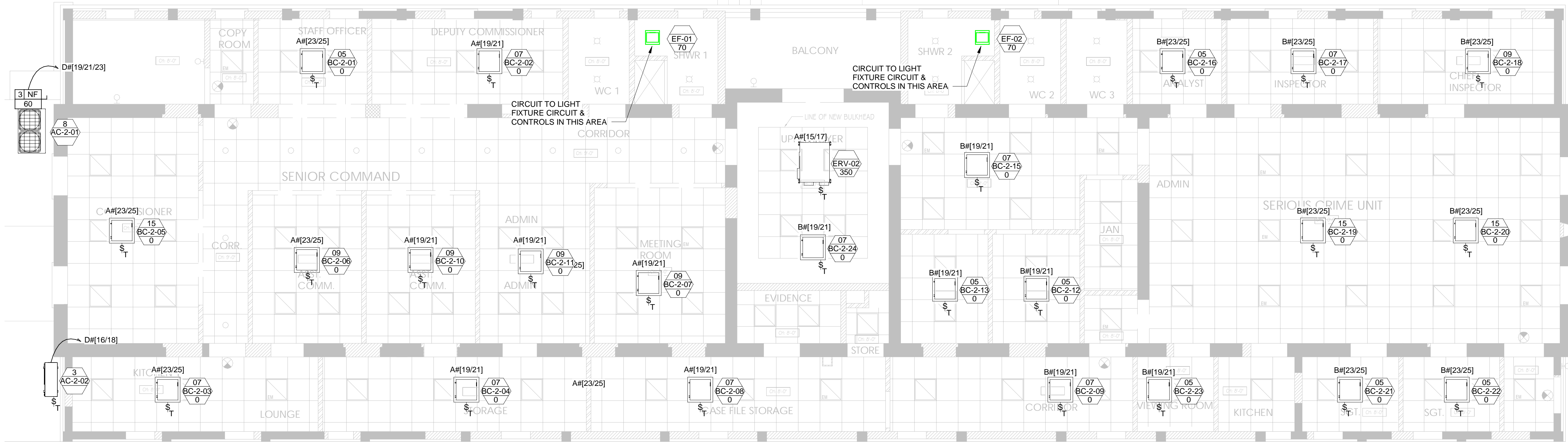
1 EXISTING ONE LINE DIAGRAM  
1/4" = 1'-0"



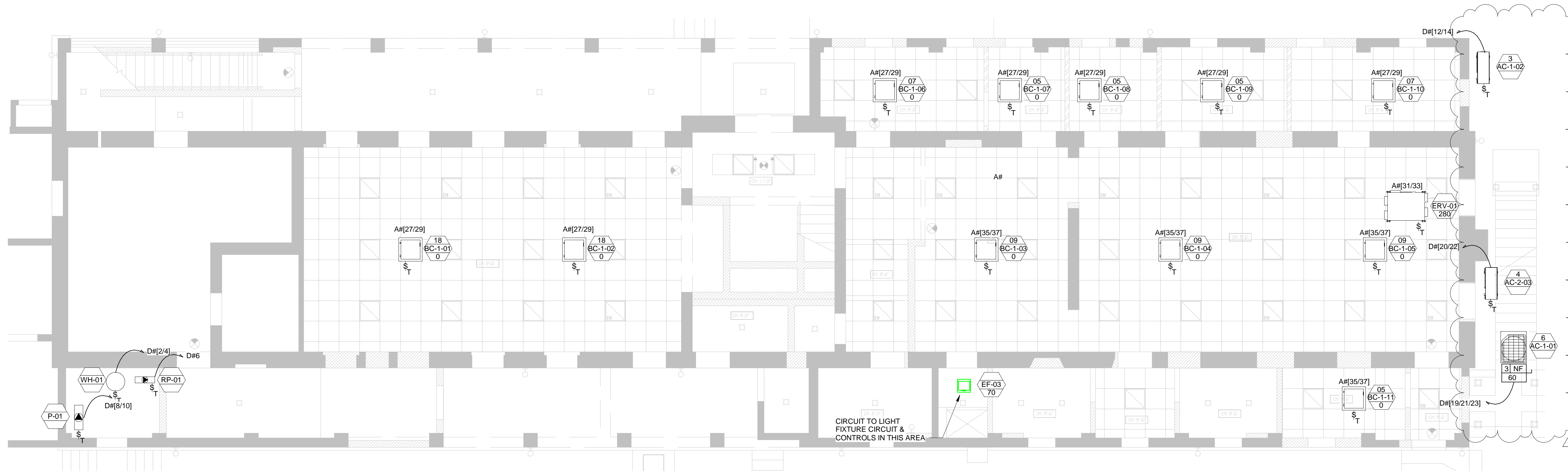
2 NEW ONE LINE DIAGRAM  
1/4" = 1'-0"







1 UPPER FLOOR MECHANICAL POWER PLAN  
E600 3/16" = 1'-0"



2 LOWER FLOOR MECHANICAL POWER PLAN  
E600 3/16" = 1'-0"



NO.	REVISION	DATE

4	REVISION	18 JUN 24
3	SECURITY LIGHTS	19 FEB 24
2	BUILDING PERMIT	7 OCT 22
1	BUILDING PERMIT	22 MAR 21



**ONSITE ENGINEERING SERVICES LTD.**

Location: 27 Jubilee Rd, Devonshire DV06  
 Mail: P.O. Box HM 2170, Hamilton HMJX, Bermuda  
 Tel: 441-297-0592 | Fax: 441-295-1988 | Email: info@onsite.bm

PREPARED BY: JB    CHECKED BY: JB    APPROVED BY: JB

PROJECT NAME

**POLICE HQ FIT-OUT**

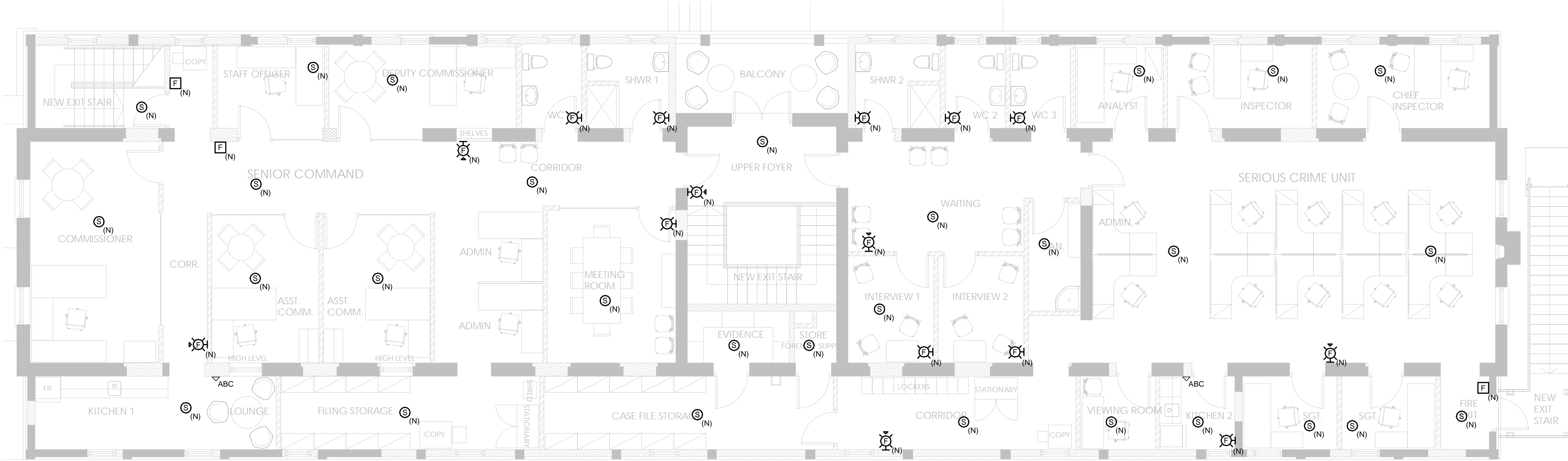
33 HEADQUARTERS HILL  
 DEVONSHIRE, DV02

**MECH POWER PLANS**

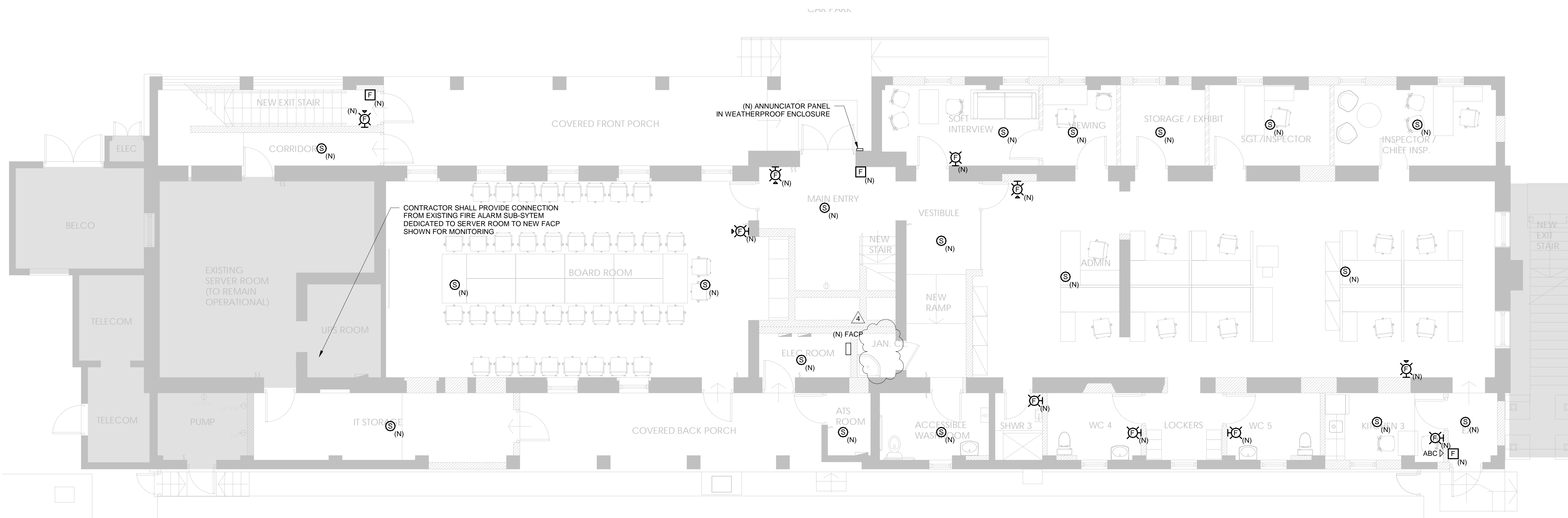
ISSUED FOR REVISION

SCALE: 3/16" = 1'-0"    SHEET SIZE: 24" x 36"

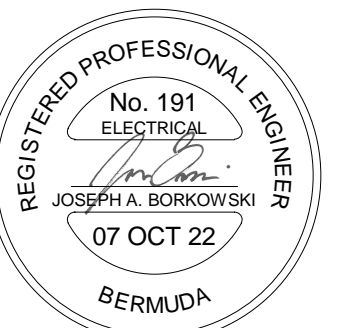
PROJECT NO: 21013    SHEET NO: E600    REVISION: 4



2 UPPER FLOOR FIRE ALARM PLAN  
FA400 3/16" = 1'-0"



1 LOWER FLOOR FIRE ALARM PLAN  
FA400 3/16" = 1'-0"



NO.	REVISION	DATE
4	REVISION	18 JUN 24
3	SECURITY LIGHTS	19 FEB 24
2	BUILDING PERMIT	7 OCT 22
1	BUILDING PERMIT	22 MAR 21



**ONSITE ENGINEERING SERVICES LTD.**

Location: 27 Jubilee Rd, Devonshire DV06  
Mail: P.O. Box HM 2170, Hamilton HMJX, Bermuda  
Tel: 441-297-0592 | Fax: 441-295-1988 | Email: info@onsite.bm

PREPARED BY: JB    CHECKED BY: JB    APPROVED BY: JB

PROJECT NAME

**POLICE HQ FIT-OUT**

33 HEADQUARTERS HILL  
DEVONSHIRE, DV02

SHEET TITLE  
**FIRE ALARM PLANS**

ISSUED FOR	REVISION	SCALE	SHEET SIZE
		3/16" = 1'-0"	24" x 36"

PROJECT NO	SHEET NO	REVISION
21013	FA400	4